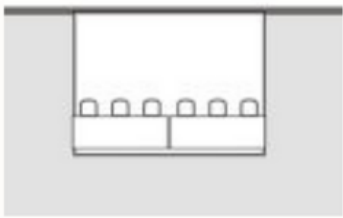
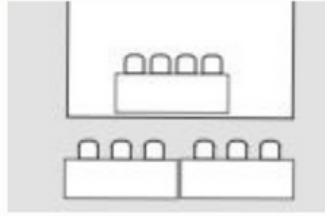


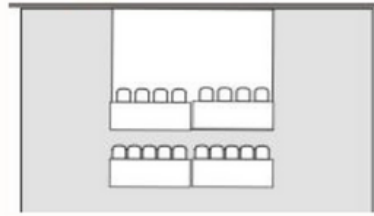
Below are head tables using the stage. With two tiers of tables.
 - The Stage must be used if having an indoor ceremony of 150 or less in the banquet room or if using the banquet room for additional seating



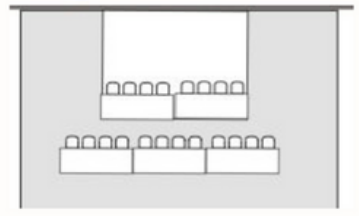
6-8



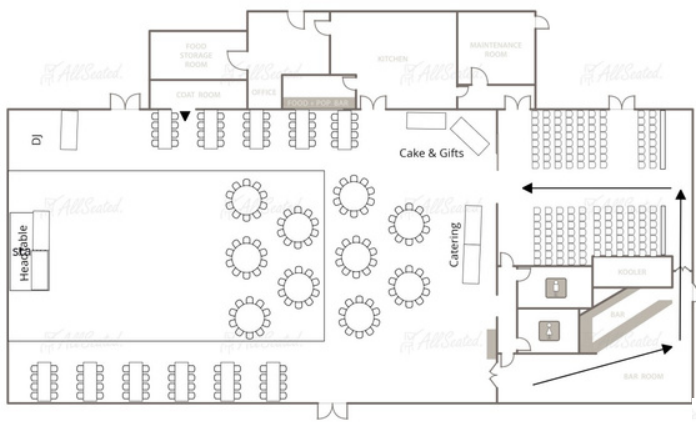
10 -12



12-18

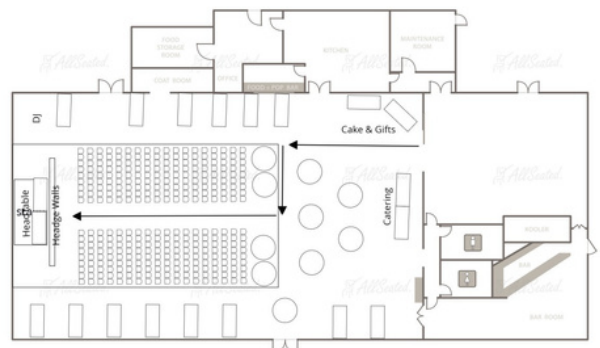


15-23



INDOOR CEREMONY 150-350

INDOOR CEREMONY >150

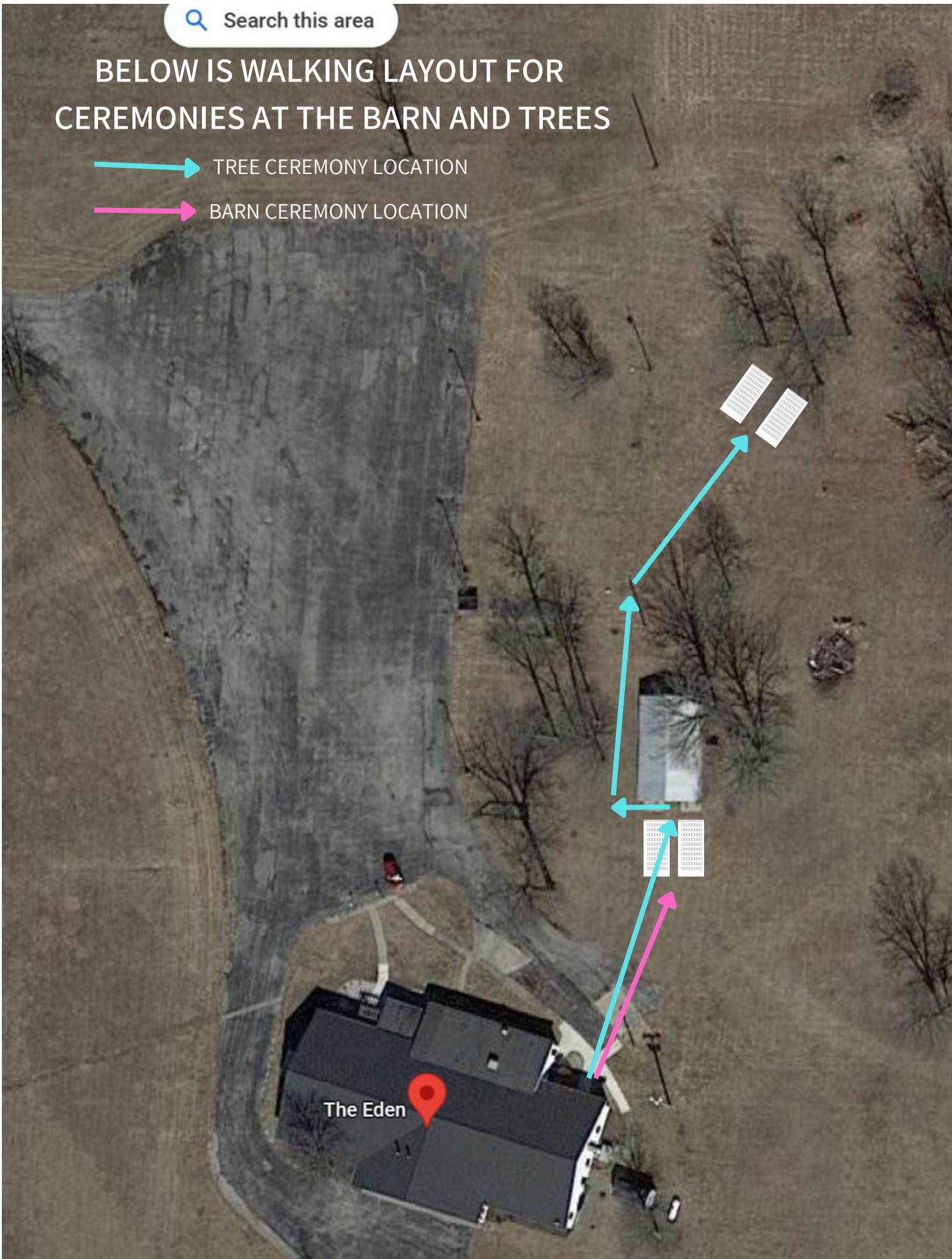


Search this area

BELOW IS WALKING LAYOUT FOR CEREMONIES AT THE BARN AND TREES

→ TREE CEREMONY LOCATION

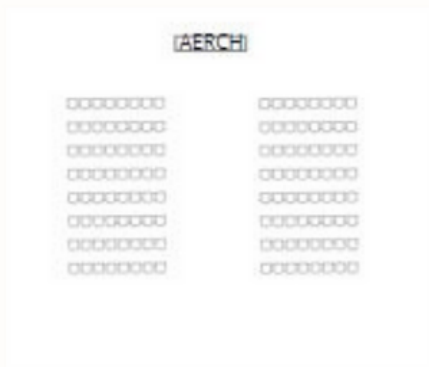
→ BARN CEREMONY LOCATION



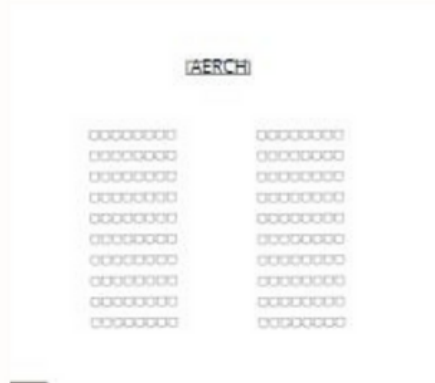
The Eden

Out door ceremonies can be held anywhere on the property. The most common locations are the barn and wood section behind the barn in the north east corner of the property. The bridal party walks out of the banquet room doors to the ceremony at the barn. When the ceremony is held in the wooded location the bridal party enters from the west side of the barn. Chairs and arches are set up the morning of the ceremony.

100 outdoor ceremony



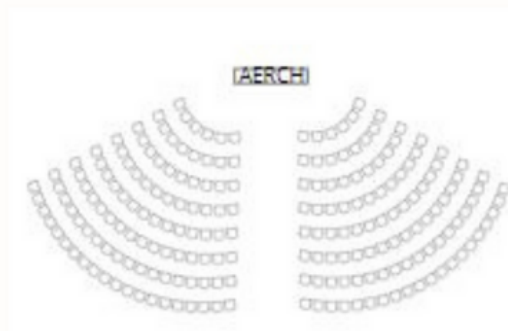
150 outdoor ceremony



200 outdoor ceremony



250 outdoor ceremony



300 outdoor ceremony

